



Welcome to your introductory lesson. I have created this tutorial for complete beginners. All concepts have been broken down into easy-to-follow segments. Happy learning!

GETTING STARTED

In this lesson plan, the following topics will be covered:

- The piano keyboard
- The first note “C”
- The musical alphabet
- The music staff
- Proper fingering
- Playing our first song (with video)
- Practice Challenge and Quiz to measure what you have learned

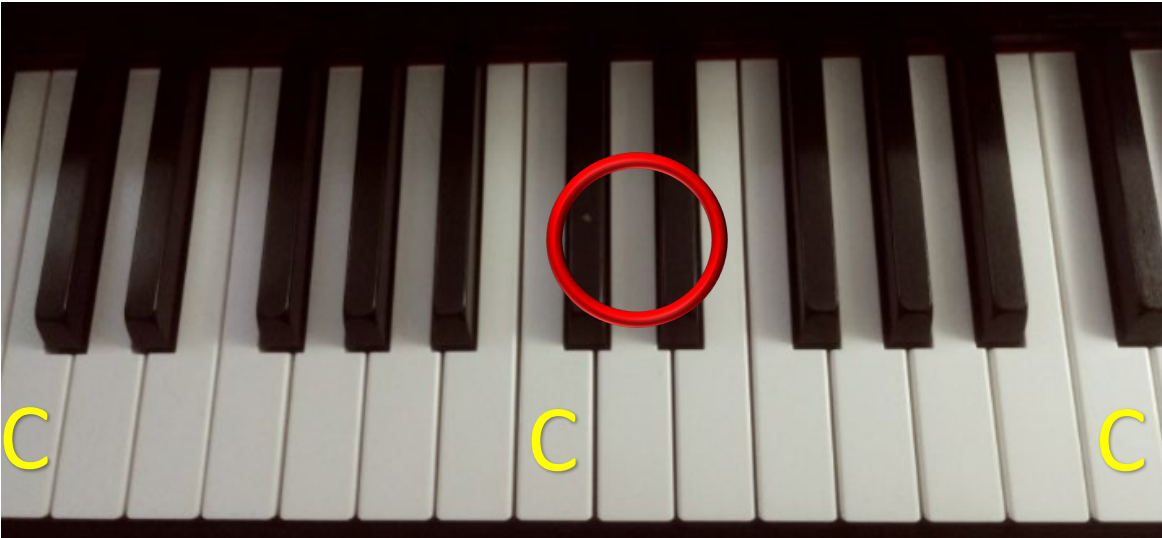
THE PIANO KEYBOARD

The traditional piano keyboard is comprised of a total of 88 white and black keys. You will notice a pattern of 7 white keys and 5 black keys in each group. These same patterns repeat themselves throughout the piano in high and low pitch. The farther you move towards the right of the keyboard, the higher the pitch (like a violin). The farther you move towards the left of the keyboard, the lower the pitch (like a tuba).



Practice: Find and play all the groups of 2 and 3 black keys on your keyboard.

THE FIRST NOTE – “C”



Let's give note number 1 a name. This is called a "C" note. More C notes are outlined in the picture. There will be more, or less based on the size of keyboard you have. This note is often called "Middle" C, because it is in the middle of the piano where you sit. It is located to the left of the group of 2 black keys.

Practice: Find and play all the C notes on your piano.

THE MUSICAL ALPHABET

The musical alphabet consists of 7 notes. It begins just like the English alphabet. The notes are: A, B, C, D, E, F, and G. These 7 notes appear in sequence up and down the piano in high and low pitch. They also sit on a combination of lines and spaces on a symbol called the music staff. This is how the language of music is read and written. We will learn more about the staff in this lesson.

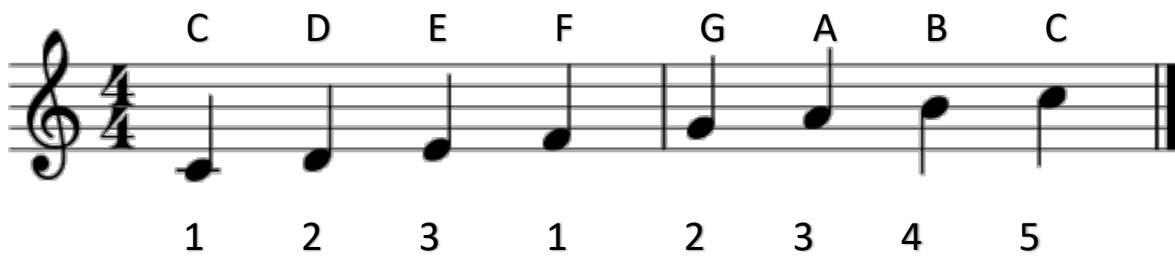
If you start on Middle C and name each note to the right, you will notice a pattern: C-D-E-F-G, next comes A, B, and then C starts over again from the beginning.



Practice: Find and play all 7 notes of the musical alphabet throughout your piano keyboard starting from C.

Hint: Use the pattern of the black keys as your guide.

THE MUSIC STAFF



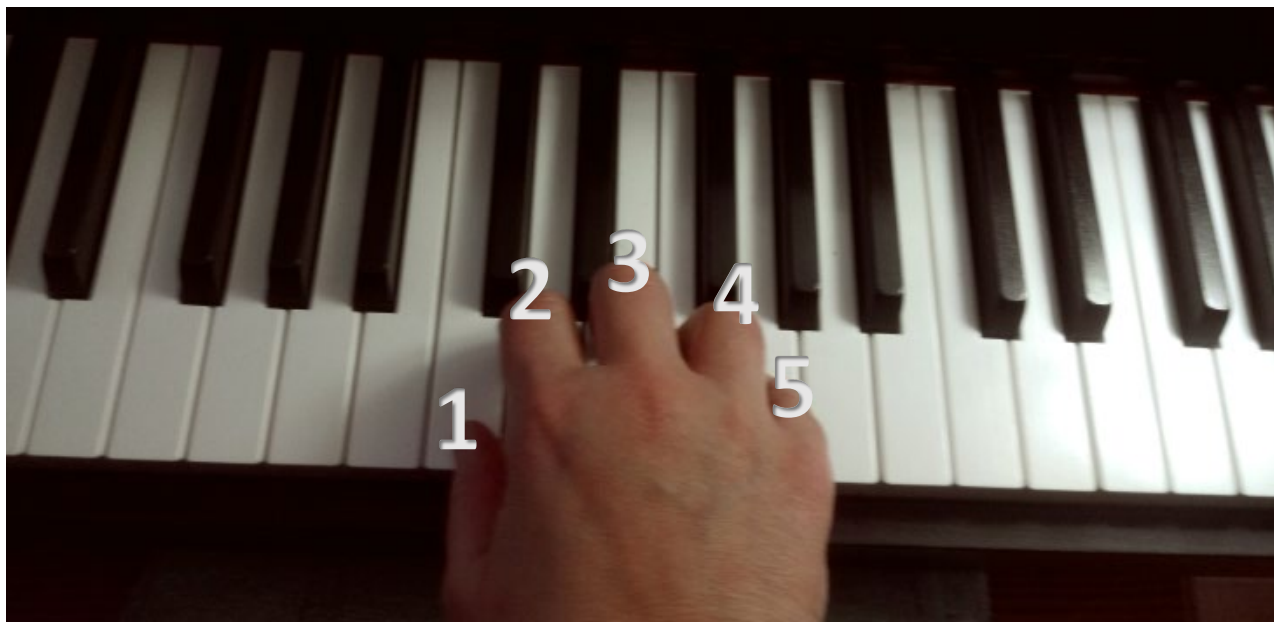
The music staff consists of 5 lines and 4 spaces. It also contains a symbol which is called the “Treble clef” and resembles the letter “S”. When you see a treble clef, it indicates that all notes to the right of middle C will be played with the right hand.

Notes are written on the lines and spaces to create music. The above staff contains the notes in the C scale. A scale is a series of 7 consecutive notes played on the lines and spaces of the staff. Countless melodies have been composed using these 7 notes. The C scale is played with only the white keys which makes this the easiest scale to learn.



PROPER FINGERING

It's very important to get into the habit of using the proper fingering right away. The reason for this is so you don't scramble to look for the next note. Your fingers should move naturally across the piano keys in the way the composer has indicated. Most beginner music is printed with the correct fingering to help you. Fingers 1-5 on the right hand are demonstrated below.



Let's return to the music staff. You will find a series of numbers underneath each note. This is the fingering for the C scale. Play the C scale using the fingering guide shown below.

C D E F G A B C

1 2 3 1 2 3 4 5

Video to C scale

https://drive.google.com/file/d/16vNzUz5PT34hs4JfK1xCW1S0CwQP_3qX/view?usp=sharing

PLAYING YOUR FIRST SONG

We have just learned the 7 notes of the musical alphabet. Now we're ready to learn our first song, "Twinkle, twinkle". Each note has been color-coded for ease of use.

Click on the video first, and then try it on your own.

Video to Twinkle twinkle

<https://drive.google.com/file/d/16yaHf6QWzfnT7tlpecn8jhpghohjkiRE/view?usp=sharing>



C C G G A A G F F E E D D C

1 1 5 5 5 5 5 4 4 3 3 2 2 1

PRACTICE CHALLENGE

Find all the C-notes on your keyboard and play Twinkle twinkle.

Congratulations! You have made it through the end of this tutorial. Now test what you have learned by taking a short quiz. Your results will automatically be sent to the email address which you provide.

Quiz

https://docs.google.com/forms/d/e/1FAIpQLSepKa6R_9h1HU3IAyyrvXIjeUM_SOEUh1hqFVQztGiFjRjcvQ/viewform?usp=sf_link

I hope you found this tutorial useful. Thanks for stopping by. If you have questions or comments, please feel free to reach out to me.

Ruthie

